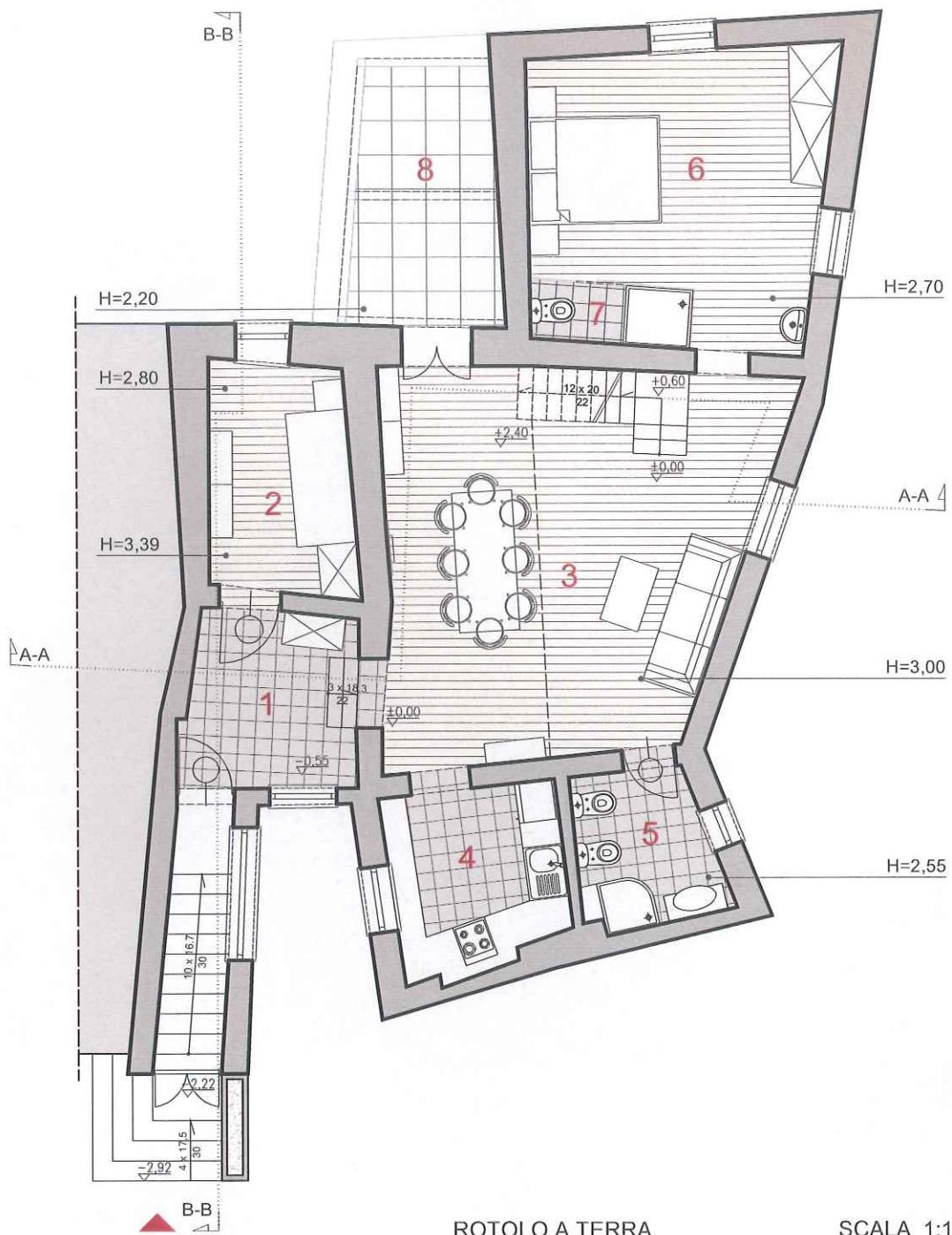


CASA IN ITALIA, SCALEA

Figura numero 1



ROTOLO A TERRA

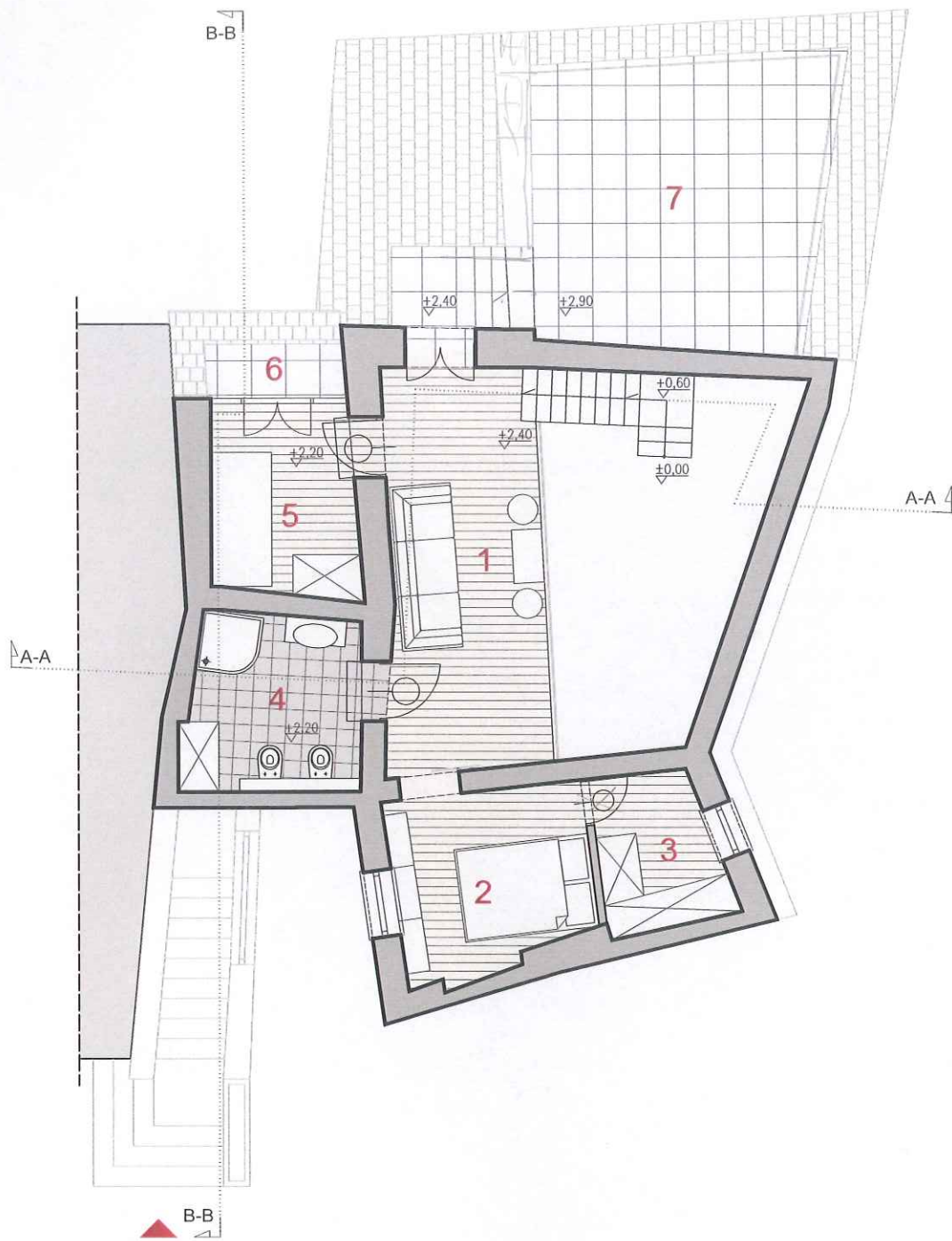
SCALA 1:100

1	Anticamera	6,6m ²
2	Camera	7,1m ²
3	Soggiorno	30,8m ²
4	Cucina	6,7m ²
5	Bagno	4,5m ²
6	Camera	17,0m ²
7	Bagno	2,0m ²
		74,7m²
8	Terrazzo	8,0m ²



CASA IN ITALIA, SCALEA

Figura numero 2



PIANO DI PROIEZIONE

SCALA 1:100

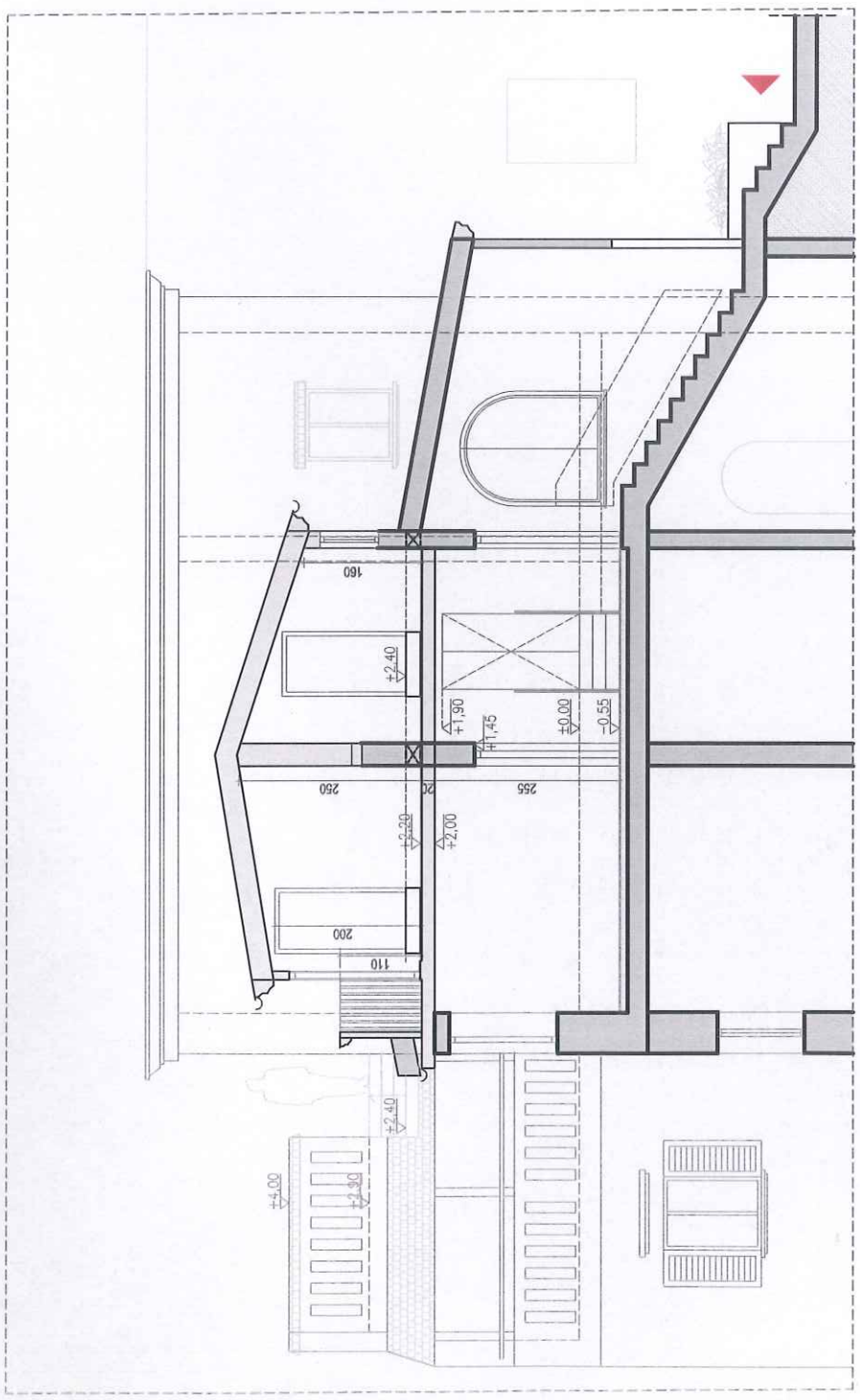
1	Mezzanino	13,5m ²
2	Camera	7,5m ²
3	Armadio	3,9m ²
4	Bagno	6,6m ²
5	Camera	6,0m ²
		37,5m²
6	Terrazzo	1,5m ²
7	Terrazzo	21,0m ²
		22,5m²



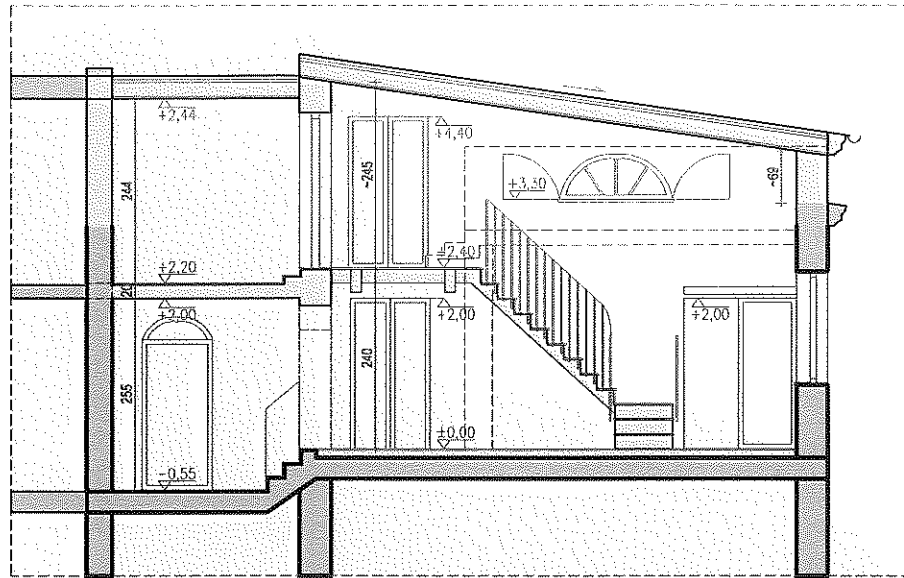
Varsavia, 06.05.2013

CASA IN ITALIA, SCALEA

Figura numero 4



SEZIONE B-B SCALA 1:100



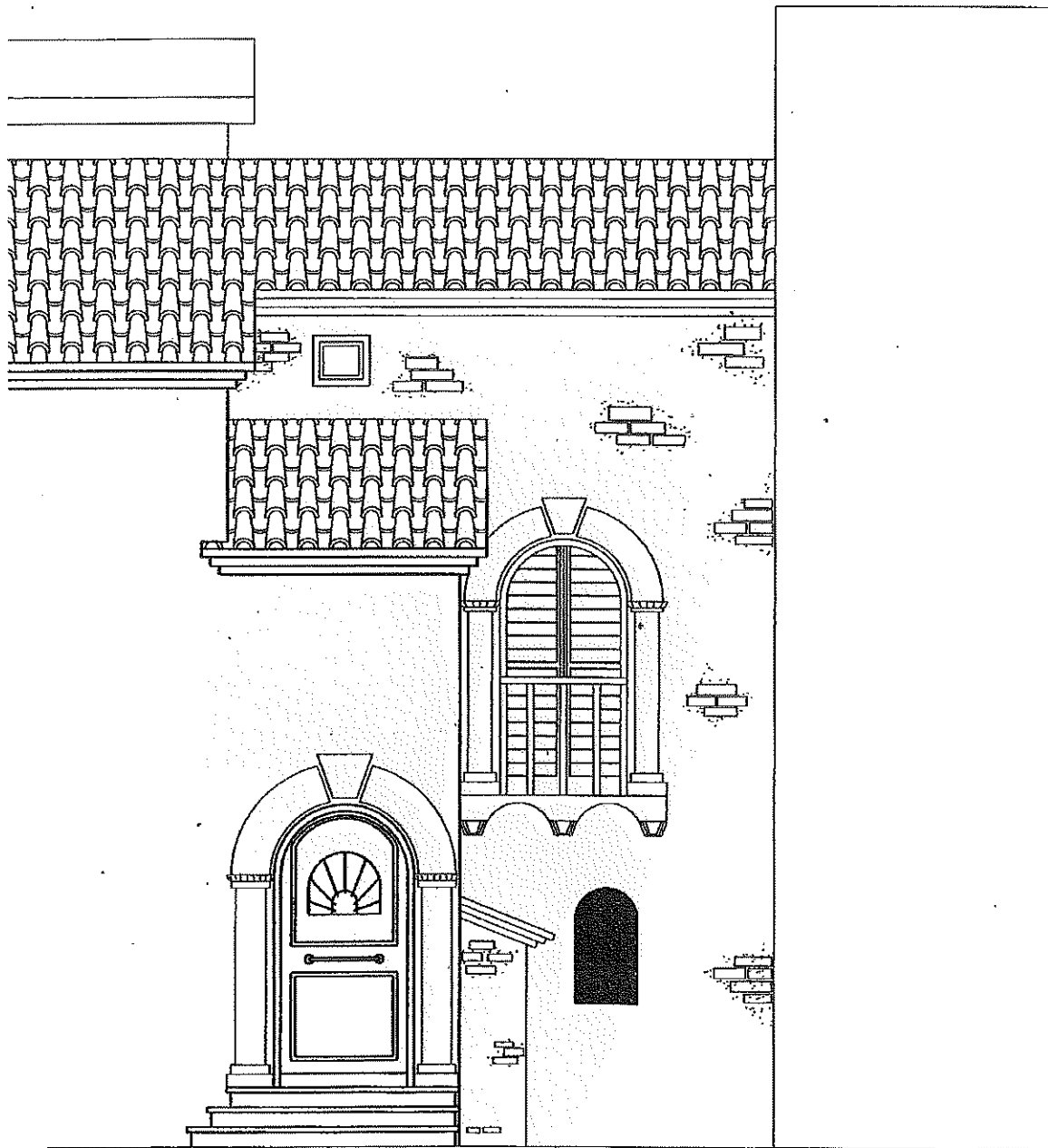
SEZIONE A-A

SCALA 1:100

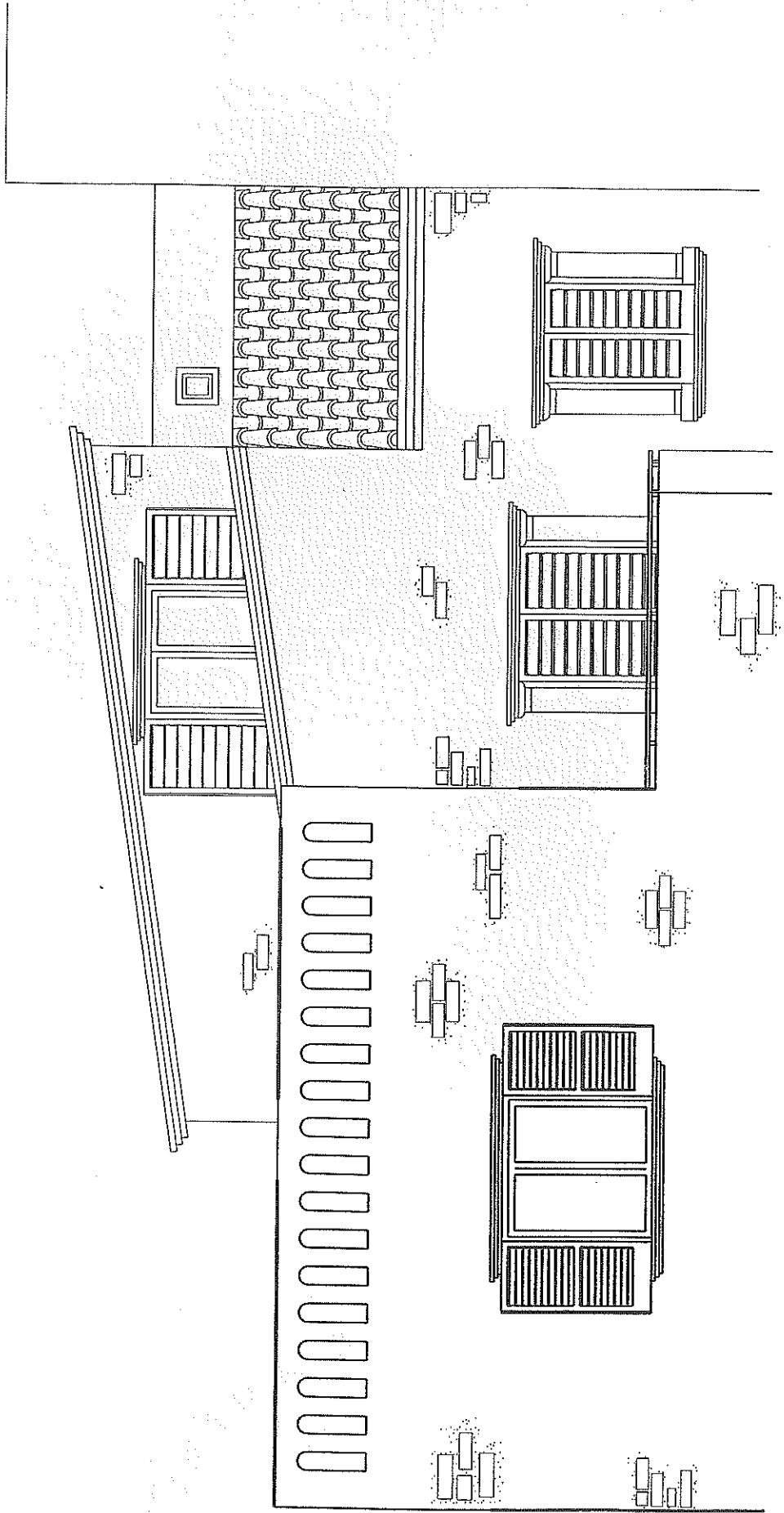


pare rustico abbas

PROSPETTO EST
entrata



PROSPETTO OVEST 1



PROSPETTO OVEST 2

